

**MAINTENANCE TRACKING TOOL**

**Pre-Maintenance**

**Usage/Calendar based maintenance (UBM/CBM)**

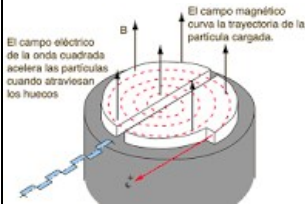
**NOTE! Refer to the PETtrace Service Manual - Maintenance (direction 2169049-100) for detailed instructions, apply LOTO and use PPE.**

<b>System ID:</b>	NE209962
<b>Maintenance performed in accordance with instructions as outlined in the PETtrace Service Manual - Maintenance (direction 2169049-100) (signature (typed and signed)):</b>	

Location	Action	Labor time (min.)	Sign.	For only optional operations note down if the operation is performed or not				
Vacuum	<p><b>NOTE! Hydrogen gas flow should be on as for normal production.</b></p> <ul style="list-style-type: none"> <li>Read and record the vacuum pressure</li> <li>Perform a BEV leak check : open the BEV for 2 minutes and close it. After 10 minutes open again the BEV, the vacuum value must not reach the value of 1.0*E-5</li> </ul>	50						
	<b>Vacuum pressure readout</b>				<b>Gas flow(sccm):</b>			
	<b>Gauge number</b>				<b>Pressure (x10- ) without gas</b>	<b>Pressure (x10- ) with gas</b>		
	A1 (4 on TCS 1001):							
	A2 (13 on TCS 1001):							
	B1 (14 on TCS 1001):							
	<b>TPG parameters</b>							
					<b>Low limit (x10- )</b>	<b>High limit (x10- )</b>		
	A1:							
	A2:							
	B1:							
	<ul style="list-style-type: none"> <li>Press OFF on the VCU, followed by VENT, read and record the current VENT time</li> </ul>							
	<b>Vacuum VENT time</b>							
	<b>System software</b>							
	<b>Subsystem</b>				<b>Version</b>			
Master:								
ACS:								
Service System:								
Manager:								
Informix (only applicable to SUN-Master Station):								
<b>VENT time:</b>	2022-11-04 07:32							

**Comments:**

**Photo name:**



**PHOTO:**

**Photo name:**

